



**UTM**  
UNIVERSITI TEKNOLOGI MALAYSIA

OPENCOURSEWARE

# **SGG 3643**

# **Programming III**

## **HTML & CSS**

**Ivin Amri Musliman**



# Contents

- n Introduction**
- n Hypertext Markup Language (HTML)**
  - n HTML Tags (bold, italics, paragraph, hyperlinks, headings, etc..)**
  - n Font Size and Color**
  - n Blank Spaces**
  - n Text Alignments**
  - n Images**
  - n Tables & Table's Border**
- n Cascading Style Sheet (CSS)**

# Introduction

- n **H**yper **T**ext **M**arkup **L**anguage (HTML)
- n Version: **HTML 4.01** / XHTML 1.0
- n The most **basic** scripting language.
- n HTML is a **markup language**, not a programming language.
- n A markup language is a set of **markup tags** for describing web pages.
- n World Wide Web Consortium (W3C) recommends lowercase attribute values in their HTML 4 recommendation.



# Introduction

## HTML Tags:

- n HTML markup tags are usually called HTML tags
- n HTML tags are keywords surrounded by **angle brackets** like `<html>`
- n HTML tags normally **come in pairs** like `<b>` and `</b>`
- n The first tag in a pair is the **start tag** (opening tags), the second tag is the **end tag** (closing tags)
- n Use **lowercase** for attribute names and attribute values (case-insensitive).
- n Newer versions of (X)HTML will demand lowercase attributes.



# HTML

## n The essentials tags:

```
<html>
```

```
<head>
```

```
<title>Greetings from the Web</title>
```

```
</head>
```

```
<body>
```

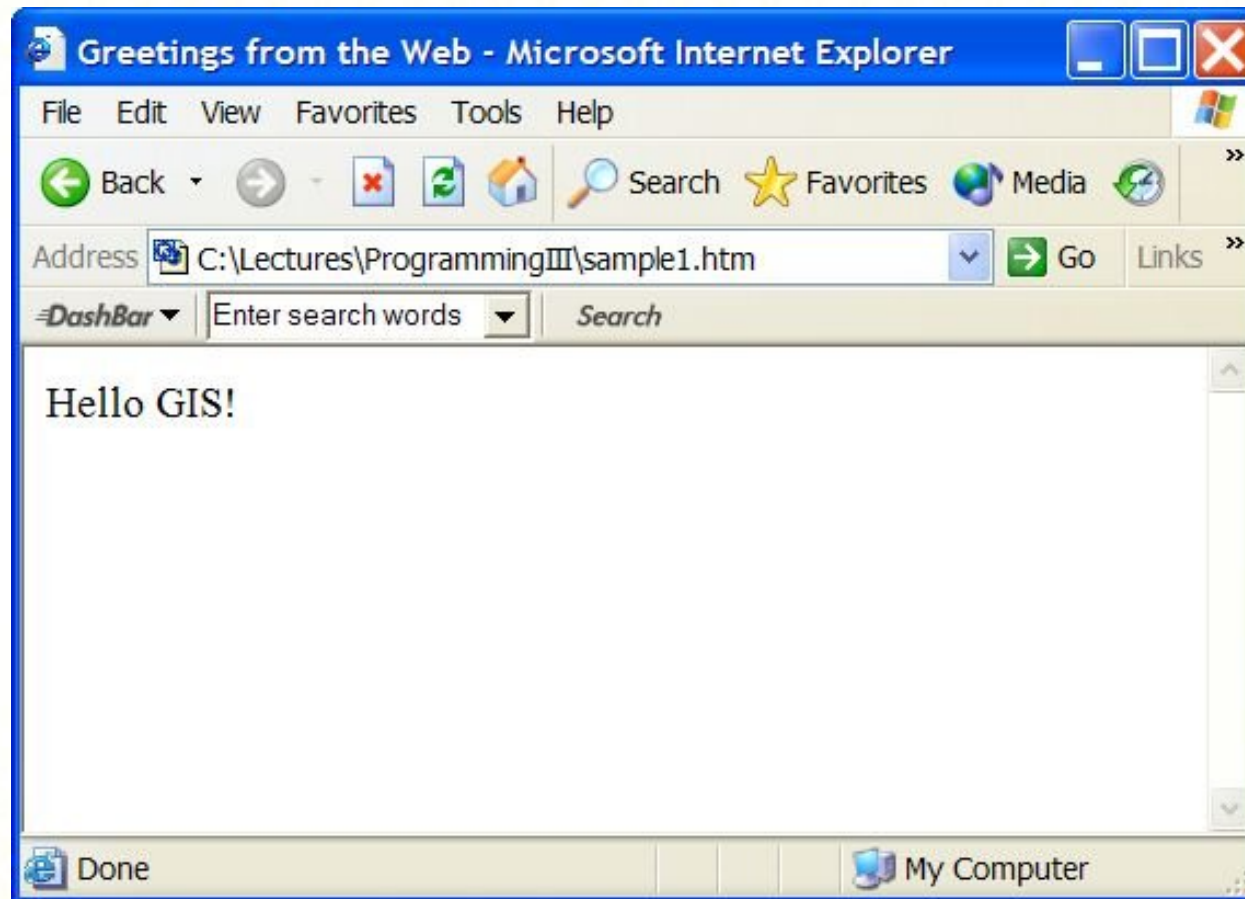
```
<p>Hello GIS!</p>
```

```
</body>
```

```
</html>
```



# HTML



# Basic Tags

- **<html></html>**  
Creates an HTML document
- **<head></head>**  
Sets off the title and other information that isn't displayed on the Web page itself
- **<body></body>**  
Sets off the visible portion of the document

# Header Tags

- **<title></title>**  
Puts the name of the document in the title bar



# Body Attributes

- **<body bgcolor=?>**  
Sets the background color, using name or hex value
- **<body text=?>**  
Sets the text color, using name or hex value
- **<body link=?>**  
Sets the color of links, using name or hex value
- **<body vlink=?>**  
Sets the color of followed links, using name or hex value
- **<body alink=?>**  
Sets the color of links on click



# Text Tags

- `<pre></pre>`  
Creates preformatted text
- `<h1></h1>`  
Creates the largest headline
- `<h6></h6>`  
Creates the smallest headline
- `<b></b>`  
Creates bold text
- `<i></i>`  
Creates italic text
- `<tt></tt>`  
Creates teletype, or typewriter-style text



# Text Tags II

- **<cite></cite>**  
Creates a citation, usually italic
- **<em></em>**  
Emphasizes a word (with italic or bold)
- **<strong></strong>**  
Emphasizes a word (with italic or bold)
- **<font size=?></font>**  
Sets size of font, from 1 to 7)
- **<font color=?></font>**  
Sets font color, using name or hex value



# Links

- `<a href="URL"></a>`  
Creates a hyperlink
- `<a href="mailto:EMAIL"></a>`  
Creates a mailto link
- `<a name="NAME"></a>`  
Creates a target location within a document
- `<a href="#NAME"></a>`  
Links to that target location from elsewhere in the document

# Formatting

- **<p></p>**  
Creates a new paragraph
- **<p align=?>**  
Aligns a paragraph to the left, right, or center
- **<br>**  
Inserts a line break
- **<blockquote></blockquote>**  
Indents text from both sides
- **<dl></dl>**  
Creates a definition list
- **<dt>**  
Precedes each definition term



# Formatting II

- **<dd>**  
Precedes each definition
- **<ol></ol>**  
Creates a numbered list
- **<li></li>**  
Precedes each list item, and adds a number
- **<ul></ul>**  
Creates a bulleted list
- **<div align=?>**  
A generic tag used to format large blocks of HTML, also used for stylesheets

# Graphical Elements

- ****  
Adds an image
  - ****  
Aligns an image: left, right, center; bottom, top, middle
  - ****  
Sets size of border around an image
- **<hr/>**  
Inserts a horizontal rule
  - **<hr size=?>**  
Sets size (height) of rule
  - **<hr width=?>**  
Sets width of rule, in percentage or absolute value
  - **<hr noshade>**  
Creates a rule without a shadow



# Tables

- **<table></table>**  
Creates a table
- **<tr></tr>**  
Sets off each row in a table
- **<td></td>**  
Sets off each cell in a row
- **<th></th>**  
Sets off the table header (a normal cell with bold, centered text)



# Table Attributes

- **<table border=#>**  
Sets width of border around table cells
- **<table cellspacing=#>**  
Sets amount of space between table cells
- **<table cellpadding=#>**  
Sets amount of space between a cell's border and its contents
- **<table width=# or %>**  
Sets width of table: in pixels or as a percentage of document width

## Table Attributes II

- **<tr align=?> or <td align=?>**  
Sets alignment for cell(s) (left, center, or right)
- **<tr valign=?> or <td valign=?>**  
Sets vertical alignment for cell(s) (top, middle, or bottom)
- **<td colspan=#>**  
Sets number of columns a cell should span
- **<td rowspan=#>**  
Sets number of rows a cell should span (default=1)
- **<td nowrap>**  
Prevents the lines within a cell from being broken to fit

# Frame

- **<frameset></frameset>**  
Replaces the <body> tag in a frames document; can also be nested in other framesets
- **<frameset rows="value,value">**  
Defines the rows within a frameset, using number in pixels, or percentage of width
- **<frameset cols="value,value">**  
Defines the columns within a frameset, using number in pixels, or percentage of width
- **<frame>**  
Defines a single frame - or region - within a frameset
- **<noframes></noframes>**  
Defines what will appear on browsers that don't support frames



# Frame Attributes

- **<frame src="URL">**  
Specifies which HTML document should be displayed
- **<frame name="name">**  
Names the frame, or region, so it may be targeted by other frames
- **<frame marginwidth=#>**  
Defines the left and right margins for the frame; must be equal to or greater than 1
- **<frame marginheight=#>**  
Defines the top and bottom margins for the frame; must be equal to or greater than 1



# Frame Attributes II

- **<frame scrolling=VALUE>**  
Sets whether the frame has a scrollbar; value may equal "yes," "no," or "auto." The default, as in ordinary documents, is auto.
- **<frame noresize>**  
Prevents the user from resizing a frame

# Forms

§ For functional forms, you'll have to run a **CGI script**. The HTML just creates the appearance of a form.

- **<form></form>**  
Creates all forms
- **<select multiple name="NAME" size=?></select>**  
Creates a scrolling menu. Size sets the number of menu items visible before you need to scroll.
- **<option>**  
Sets off each menu item
- **<select name="NAME"></select>**  
Creates a pull down menu
- **<option>**  
Sets off each menu item



# Forms II

- **<textarea name="NAME" cols=40 rows=8></textarea>**  
Creates a text box area. Columns set the width; rows set the height.
- **<input type="checkbox" name="NAME">**  
Creates a checkbox. Text follows tag.
- **<input type="radio" name="NAME" value="x">**  
Creates a radio button. Text follows tag
- **<input type="text" name="Lot\_Tanah" size=20>**  
Creates a one-line text area. Size sets length, in characters.
- **<input type="image" border=0 name="NAME" src="name.gif">**  
Creates a Submit button using an image

# Forms III

- `<input type="submit" value="NAME">`  
Creates a Submit button
- `<input type="reset">`  
Creates a Reset button